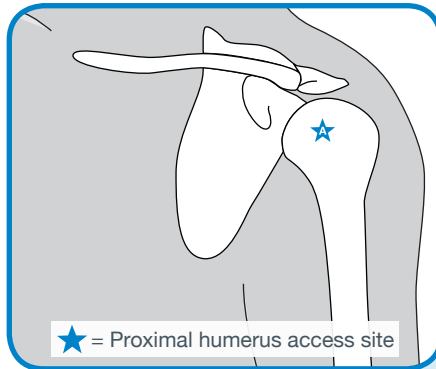


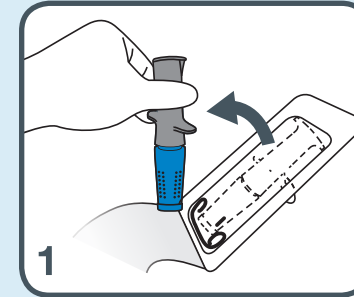
### LOCATING THE PROXIMAL TIBIA

- A: Tibial tuberosity
- B: 2cm (1in) medially, towards inner leg
- C: 1cm (0.5in) superior, towards knee



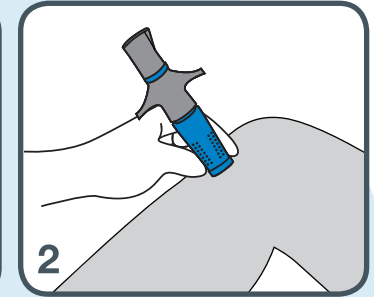
### LOCATING THE PROXIMAL HUMERUS

- A. Adduct patient's arm with hand over umbilicus. One hand bisects the arm at the deltoid, while the other hand bisects the axilla anteriorly. Rotate hands inward until the thumbs meet. Palpate the surgical head of the humerus with your thumbs, then move 1cm (0.5in) upward to the greater tubercle.

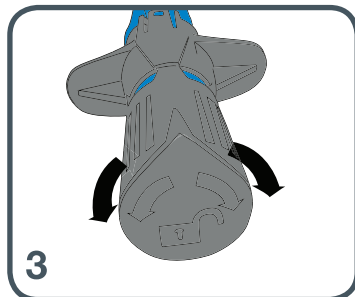


### OPERATING THE NIO

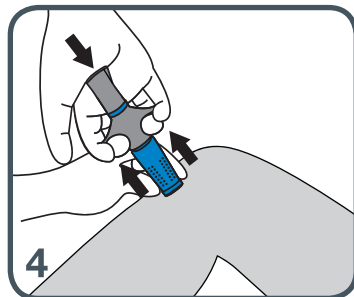
1. Remove the NIO from its packaging. Locate and disinfect access site.



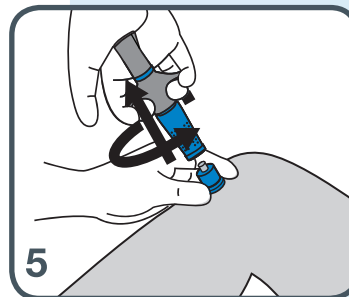
2. With your non-dominant hand, hold the NIO by the textured dots at a 90° angle to the access site and maintain downward pressure.



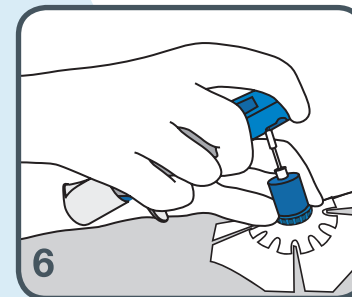
3. With the device in contact with the patient's skin, unlock the NIO by rotating the cap 90° in either direction until the cap aligns with the trigger wings. **Deploying the NIO is always a two-handed procedure.**



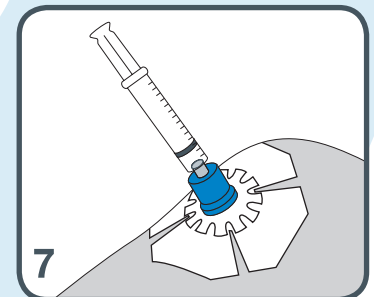
4. Place the palm of your dominant hand over the cap of the NIO and apply downward pressure. With your non-dominant hand, continue to stabilize the NIO against the patient's skin. While maintaining downward pressure with your dominant hand, use your fingers to squeeze the trigger wings. This will deploy the device.



5. Grasp and hold the blue stabilizer base with your fingers and gently lift the NIO in an upward and rotating motion.



6. Place the NIO Fixation dressing over the stabilizer base. Next, hold the stabilizer base firmly and remove the trocar by pulling it up with your fingers or by using the keyhole notch on the distal end of the device, leaving the cannula in the stabilizer base.



7. Connect a syringe and aspirate for bone marrow. Confirm placement by flushing with up to 20cc of fluid, per institutional protocol. To apply extension tubing with primed tubing, press luer hub down firmly and apply a quarter turn clockwise.